

Test Report

Applicant : Meizhou Doking Electronic Technology Co., Ltd.
Address : Huangming Village, North Town, Huancheng Road, Meizhou City, Guangdong Province, China
Manufacturer : Meizhou Doking Electronic Technology Co., Ltd.
Address : Huangming Village, North Town, Huancheng Road, Meizhou City, Guangdong Province, China

The submitted sample and sample information was/were submitted and identified by/on the behalf of the client

Sample name : Wired Mouse
Sample Model : M782, M800, M269, M313, M311, M315, M310, M312, M314, M801, M264D, M275, M305, M307, M316, M317, M771D, M751, M126, M106, M128, M792, M759D, M809D, M811D, M823D, M798D, M812, M813D, M814D, M815, M804, M129, M309, M201, M799D, M819D, M795D, M352, M351, M284, M347, M353, M262, M270, M256, M06055
Trademark : N/A

TEST INFORMATION

Date of Receipt : 2021-11-04
Date of Test : 2021-11-04 to 2022-01-20
Test Method : Please refer to the following page(s).
Test Result(s) : Please refer to the following page(s).

Test Requested	Conclusion
As specified by client, according to RoHS Directive 2011/65/EU with amendment (EU) 2015/863 to test Lead (Pb), Cadmium (Cd), Mercury(Hg), Hexavalent Chromium(Cr(VI)), Polybrominated Biphenyls(PBBs), Polybrominated Diphenyl Ethers(PBDEs), Phthalates(DBP, BBP, DEHP, DIBP) in the submitted sample(s)	Pass

Test/Witness Engineer :



Approved & Authorized :

Shenzhen LH Testing Technology Co., Ltd.

201 ~ 203, building 22, Yongli Industrial Zone, Tangxi, guxing community, Xixiang street,

Bao'an District, Shenzhen

Tel: +0755-23217660 Email: lihancert@163.com www.lh-cert.com

Tested Sample/Part Description

No.	Component Description(non-metallic)	No.	Component Description(metal)
1	PCB	15	Screw
2	The signal line	16	Iron
3	Encoder	17	USB Interface
4	The micro switch	18	Copper Wire
5	Electrolytic capacitor	19	Solder
6	Optical IC		
7	Luminous Diode		
8	Resistance		
9	Key		
10	Middle frame		
11	Lower cover		
12	3D wheel		
13	Lens		
14	Door mat		

Test Result of XRF
(1)XRF

Tested Item(s)	Result									
	1	2	3	4	5	6	7	8	9	10
Lead (Pb)	BL	BL	BL	BL	BL	BL	BL	BL	BL	BL
Cadmium (Cd)	BL	BL	BL	BL	BL	BL	BL	BL	BL	BL
Mercury (Hg)	BL	BL	BL	BL	BL	BL	BL	BL	BL	BL
Total Chromium (Cr)	BL	BL	BL	BL	BL	BL	BL	BL	BL	BL
Total Bromine (Br)	BL	BL	BL	BL	BL	BL	BL	BL	BL	BL

Tested Item(s)	Result								
	11	12	13	14	15	16	17	18	19
Lead (Pb)	BL	BL	BL	BL	BL	BL	BL	BL	BL
Cadmium (Cd)	BL	BL	BL	BL	BL	BL	BL	BL	BL
Mercury (Hg)	BL	BL	BL	BL	BL	BL	BL	BL	BL
Total Chromium (Cr)	BL	BL	BL	BL	BL	BL	BL	BL	BL
Total Bromine (Br)	BL	BL	BL	BL	/	/	/	/	/

(1)Test Method

Tested Item(s)	Test Method	Test instrument
Lead (Pb) Cadmium (Cd) Mercury (Hg) Total Chromium (Cr) Total Bromine (Br)	IEC 62321-2:2013, IEC 62321-1:2013, IEC 62321-3-1:2013,	XRF

Remark:

- (a) BL = Below Limit, OL = Over Limit, LOD = Limit of Detection, -- = Not Regulated,
 3σ = The reproducibility of analytical instruments
 X: the region where further investigation is necessary,
 *=The screened result was found by XRF and further chemical test was suggested
- (b) There are the results on total Br while test items on restricted substances are PBBs and PBDEs.
 There is the result on total Cr while test item on restricted substances is Cr(VI).
- (c) Results are obtained by EDXRF for primary screening, and further chemical testing by
 ICP-OES (for Cd, Pb, Hg), UV-Vis (for Cr(VI)) and GC-MS (for PBBs, PBDEs) is recommended to
 be performed, if the concentration exceeds the below warning value according to IEC62321 (unit:
 mg/kg).

Element	Polymer materials	Metallic materials	Composite materials
Cadmium (Cd)	$BL \leq (70-3\delta) < X < (130+3\delta) \leq OL$	$BL \leq (70-3\delta) < X < (130+3\delta) \leq OL$	$LOD < X < (150+3\delta) \leq OL$
Lead (Pb)	$BL \leq (700-3\delta) < X < (1300+3\delta) \leq OL$	$BL \leq (700-3\delta) < X < (1300+3\delta) \leq OL$	$BL \leq (500-3\delta) < X < (1500+3\delta) \leq OL$
Mercury (Hg)	$BL \leq (700-3\delta) < X < (1300+3\delta) \leq OL$	$BL \leq (700-3\delta) < X < (1300+3\delta) \leq OL$	$BL \leq (500-3\delta) < X < (1500+3\delta) \leq OL$
Chromium (Cr)	$BL \leq (700-3\delta) < X$	$BL \leq (700-3\delta) < X$	$BL \leq (500-3\delta) < X$
Bromine (Br)	$BL \leq (300-3\delta) < X$	Not Applicable	$BL \leq (250-3\delta) < X$

RoHS Requirement

Restricted substances	Limits
Lead(Pb)	0.1%(1000 ppm)
Cadmium(Cd)	0.01%(100 ppm)
Mercury(Hg)	0.1%(1000 ppm)
Chromium(VI)(Cr6+)	0.1%(1000 ppm)
Polybrominated biphenyls(PBBs)	0.1%(1000 ppm)
Polybrominated diphenyl ethers (PBDEs)	0.1%(1000 ppm)

The above limits were quoted from 2011/65/EU with amendment (EU) 2015/863.

(2)Chemical Test

(a)The test result of PBBs, PBDEs

Tested Item	Result(mg/kg)						
	1	2	3	4	5	6	7
Monobromobiphenyl (MonoBB)	N.D.	N.D.	N.D.	N.D.	N.D.	N.D.	N.D.
Dibromobiphenyl (DiBB)	N.D.	N.D.	N.D.	N.D.	N.D.	N.D.	N.D.
Tribromobiphenyl (TriBB)	N.D.	N.D.	N.D.	N.D.	N.D.	N.D.	N.D.
Tetrabromobiphenyl (TetraBB)	N.D.	N.D.	N.D.	N.D.	N.D.	N.D.	N.D.
Pentabromobiphenyl (PentaBB)	N.D.	N.D.	N.D.	N.D.	N.D.	N.D.	N.D.
Hexabromobiphenyl (HexaBB)	N.D.	N.D.	N.D.	N.D.	N.D.	N.D.	N.D.
Heptabromobiphenyl (HeptaBB)	N.D.	N.D.	N.D.	N.D.	N.D.	N.D.	N.D.
Octabromobiphenyl (OctaBB)	N.D.	N.D.	N.D.	N.D.	N.D.	N.D.	N.D.
Nonabromobiphenyl (NonaBB)	N.D.	N.D.	N.D.	N.D.	N.D.	N.D.	N.D.
Decabromobiphenyl (DecaBB)	N.D.	N.D.	N.D.	N.D.	N.D.	N.D.	N.D.
Sum of polybrominated Biphenyls(PBBs)	N.D.	N.D.	N.D.	N.D.	N.D.	N.D.	N.D.
Monobromodiphenyl ether (MonoBDE)	N.D.	N.D.	N.D.	N.D.	N.D.	N.D.	N.D.
Dibromodiphenyl ether (DiBDE)	N.D.	N.D.	N.D.	N.D.	N.D.	N.D.	N.D.
Tribromodiphenyl ether (TriBDE)	N.D.	N.D.	N.D.	N.D.	N.D.	N.D.	N.D.
Tetrabromodiphenyl ether (TetraBDE)	N.D.	N.D.	N.D.	N.D.	N.D.	N.D.	N.D.
Pentabromodiphenyl ether (PentaBDE)	N.D.	N.D.	N.D.	N.D.	N.D.	N.D.	N.D.
Hexabromodiphenyl ether (HexaBDE)	N.D.	N.D.	N.D.	N.D.	N.D.	N.D.	N.D.
Heptabromodiphenyl ether (HeptaBDE)	N.D.	N.D.	N.D.	N.D.	N.D.	N.D.	N.D.
Octabromodiphenyl ether (OctaBDE)	N.D.	N.D.	N.D.	N.D.	N.D.	N.D.	N.D.
Nonabromodiphenyl ether (NonaBDE)	N.D.	N.D.	N.D.	N.D.	N.D.	N.D.	N.D.
Decabromodiphenyl ether (DecaBDE)	N.D.	N.D.	N.D.	N.D.	N.D.	N.D.	N.D.
Sum of polybrominated diphenyl ethers(PBDEs)	N.D.	N.D.	N.D.	N.D.	N.D.	N.D.	N.D.

Tested Item	Result(mg/kg)						
	8	9	10	11	12	13	14
Monobromobiphenyl (MonoBB)	N.D.	N.D.	N.D.	N.D.	N.D.	N.D.	N.D.
Dibromobiphenyl (DiBB)	N.D.	N.D.	N.D.	N.D.	N.D.	N.D.	N.D.
Tribromobiphenyl (TriBB)	N.D.	N.D.	N.D.	N.D.	N.D.	N.D.	N.D.
Tetrabromobiphenyl (TetraBB)	N.D.	N.D.	N.D.	N.D.	N.D.	N.D.	N.D.
Pentabromobiphenyl (PentaBB)	N.D.	N.D.	N.D.	N.D.	N.D.	N.D.	N.D.
Hexabromobiphenyl (HexaBB)	N.D.	N.D.	N.D.	N.D.	N.D.	N.D.	N.D.
Heptabromobiphenyl (HeptaBB)	N.D.	N.D.	N.D.	N.D.	N.D.	N.D.	N.D.
Octabromobiphenyl (OctaBB)	N.D.	N.D.	N.D.	N.D.	N.D.	N.D.	N.D.
Nonabromobiphenyl (NonaBB)	N.D.	N.D.	N.D.	N.D.	N.D.	N.D.	N.D.
Decabromobiphenyl (DecaBB)	N.D.	N.D.	N.D.	N.D.	N.D.	N.D.	N.D.
Sum of polybrominated Biphenyls(PBBs)	N.D.	N.D.	N.D.	N.D.	N.D.	N.D.	N.D.
Monobromodiphenyl ether (MonoBDE)	N.D.	N.D.	N.D.	N.D.	N.D.	N.D.	N.D.
Dibromodiphenyl ether (DiBDE)	N.D.	N.D.	N.D.	N.D.	N.D.	N.D.	N.D.
Tribromodiphenyl ether (TriBDE)	N.D.	N.D.	N.D.	N.D.	N.D.	N.D.	N.D.
Tetrabromodiphenyl ether (TetraBDE)	N.D.	N.D.	N.D.	N.D.	N.D.	N.D.	N.D.
Pentabromodiphenyl ether (PentaBDE)	N.D.	N.D.	N.D.	N.D.	N.D.	N.D.	N.D.
Hexabromodiphenyl ether (HexaBDE)	N.D.	N.D.	N.D.	N.D.	N.D.	N.D.	N.D.
Heptabromodiphenyl ether (HeptaBDE)	N.D.	N.D.	N.D.	N.D.	N.D.	N.D.	N.D.
Octabromodiphenyl ether (OctaBDE)	N.D.	N.D.	N.D.	N.D.	N.D.	N.D.	N.D.
Nonabromodiphenyl ether (NonaBDE)	N.D.	N.D.	N.D.	N.D.	N.D.	N.D.	N.D.
Decabromodiphenyl ether (DecaBDE)	N.D.	N.D.	N.D.	N.D.	N.D.	N.D.	N.D.
Sum of polybrominated diphenyl ethers(PBDEs)	N.D.	N.D.	N.D.	N.D.	N.D.	N.D.	N.D.

(b) The test result of DBP, BBP, DEHP, DIBP

Tested Item(s)	Result						
	1	2	3	4	5	6	7
Dibutyl phthalate(DBP)	N.D.	N.D.	N.D.	N.D.	N.D.	N.D.	N.D.
Benzylbutyl phthalate(BBP)	N.D.	N.D.	N.D.	N.D.	N.D.	N.D.	N.D.
Di-2-ethylhexyl phthalate(DEHP)	N.D.	N.D.	N.D.	N.D.	N.D.	N.D.	N.D.
Diisobutyl phthalate(DIBP)	N.D.	N.D.	N.D.	N.D.	N.D.	N.D.	N.D.

Tested Item(s)	Result						
	8	9	10	11	12	13	14
Dibutyl phthalate(DBP)	N.D.	N.D.	N.D.	N.D.	N.D.	N.D.	N.D.
Benzylbutyl phthalate(BBP)	N.D.	N.D.	N.D.	N.D.	N.D.	N.D.	N.D.
Di-2-ethylhexyl phthalate(DEHP)	N.D.	N.D.	N.D.	N.D.	N.D.	N.D.	N.D.
Diisobutyl phthalate(DIBP)	N.D.	N.D.	N.D.	N.D.	N.D.	N.D.	N.D.

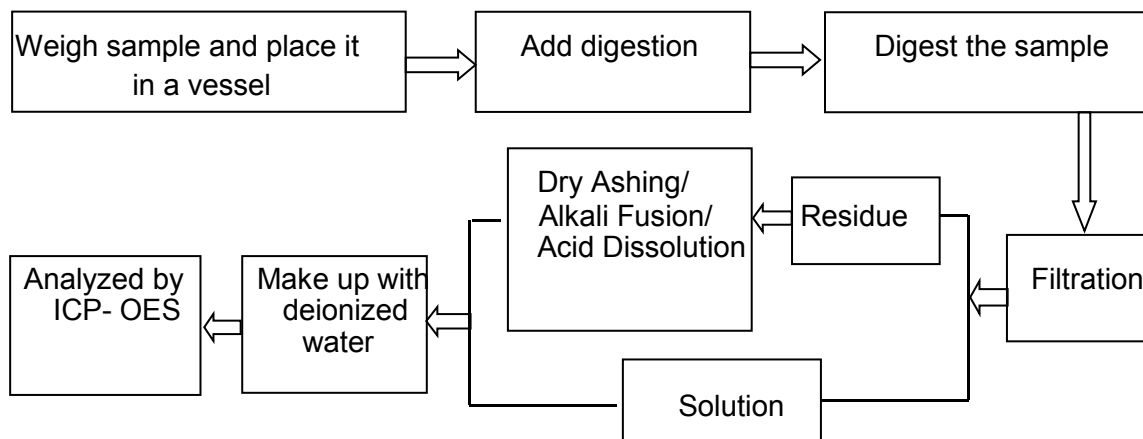
(c) Test Method for Chemical Confirmation

Test Item	Test Method	Test Instrument	MDL (mg/kg)	EU RoHS Limit (mg/kg)
Cadmium (Cd)	IEC 62321-5:2013	ICP-OES	10	100
Lead (Pb)	IEC 62321-5:2013	ICP-OES	10	1000
Mercury (Hg)	IEC 62321-4:2013	ICP-OES	10	1000
Hexavalent Chromium (Cr(VI))	IEC 62321-7-2:2017 (non-metal)	UV-Vis	10	1000
	IEC 62321-7-1:2015 (metal)	UV-Vis	0.1(μg/cm ²)	1000
Polybrominated Biphenyls (PBBs)	IEC 62321-6:2015	GC-MS	10	1000
Polybrominated Diphenyl Ethers (PBDEs)	IEC 62321-6:2015	GC-MS	10	1000
Phthalates(DBP, BBP, DEHP, DIBP)	IEC 62321-8:2017	GC-MS	50	1000

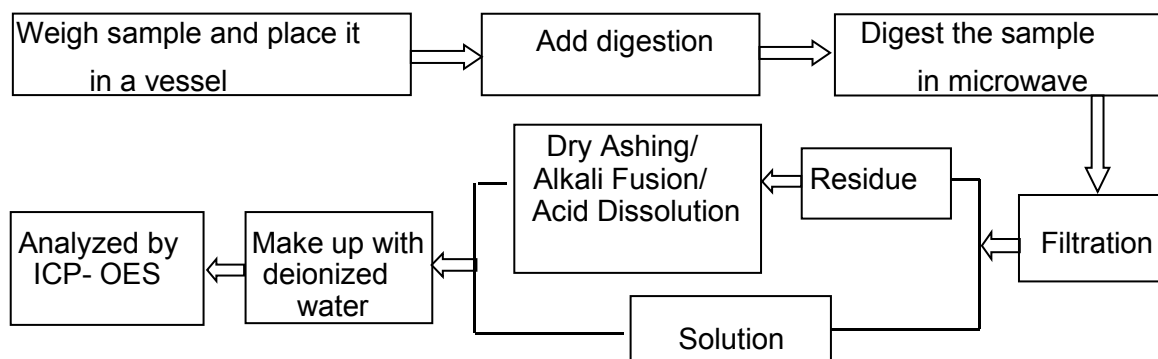
Remark: MDL = Method Detection Limit
N.D. = Not Detected (<MDL)
mg/kg = ppm = parts per million

Test Process

1. Lead(Pb), Cadmium(Cd), Chromium(Cr)

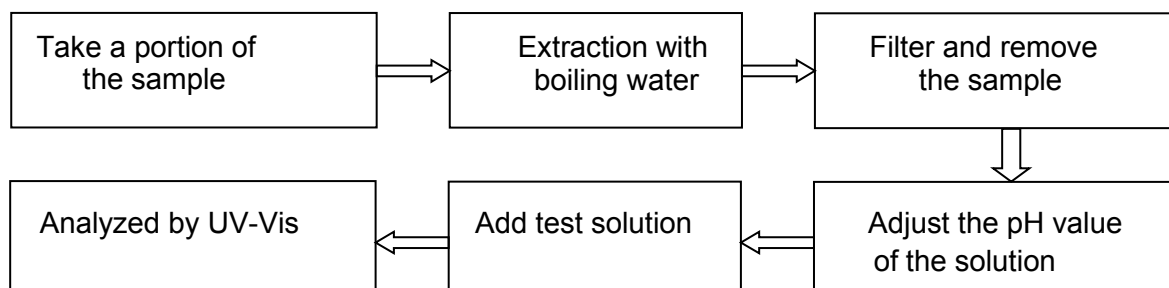


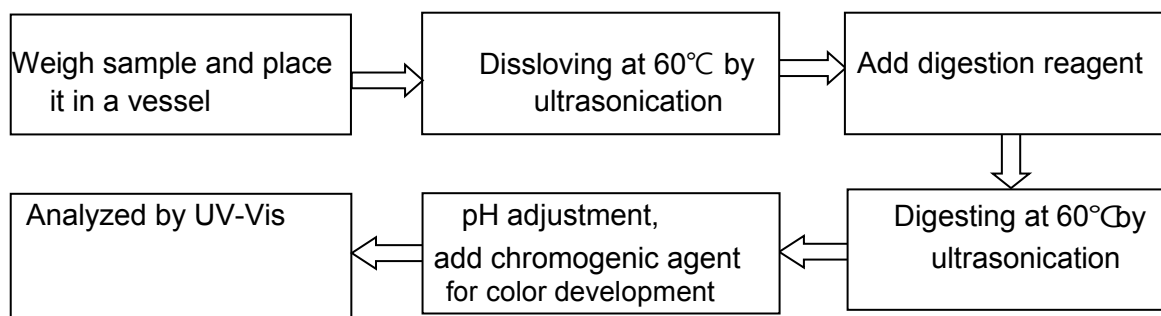
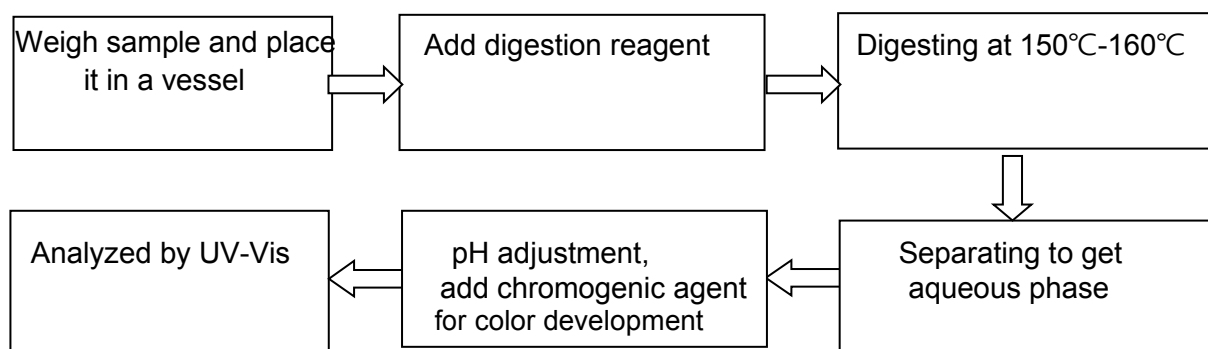
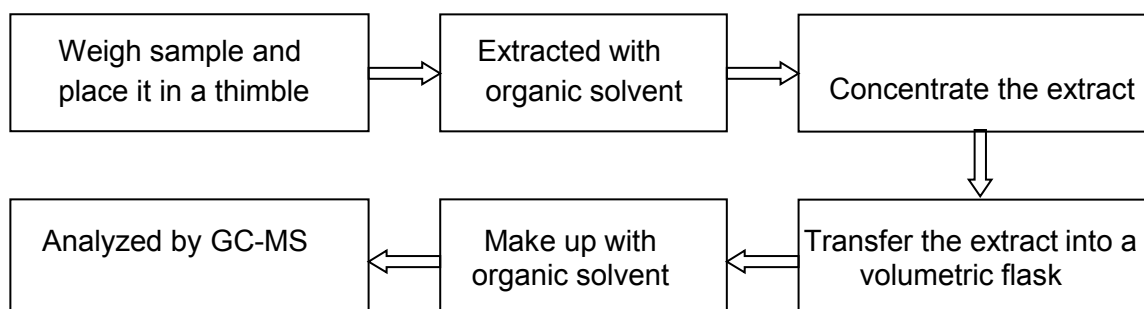
2. Mercury(Hg)



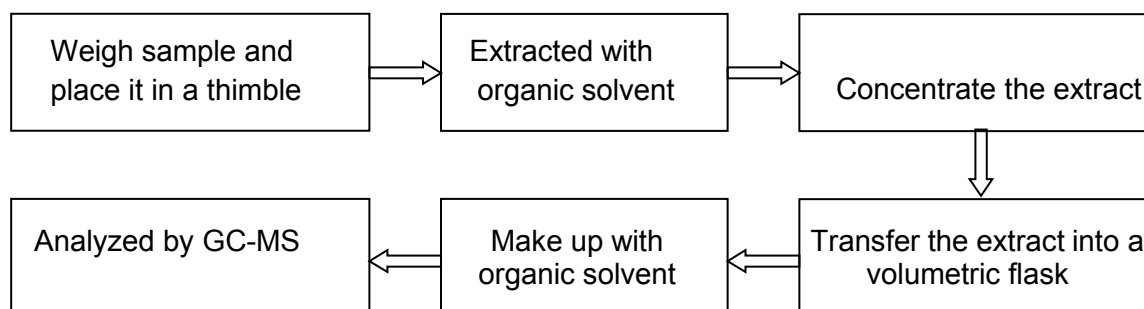
3. Hexavalent Chromium (Cr (VI))

(1) IEC 62321-7-1:2015 Plating/Metal sample(s)



(2) IEC 62321-7-2:2017**Non-metal sample(s) (Material ABS/PC/PVC)****(3) IEC 62321-7-2:2017****Non-metal sample(s) (Others)****4. Polybrominated Biphenyls (PBBs), Polybrominated Diphenyl Ethers (PBDEs)**

5. Phthalates(DBP/BBP/DEHP/DIBP)



Remark:

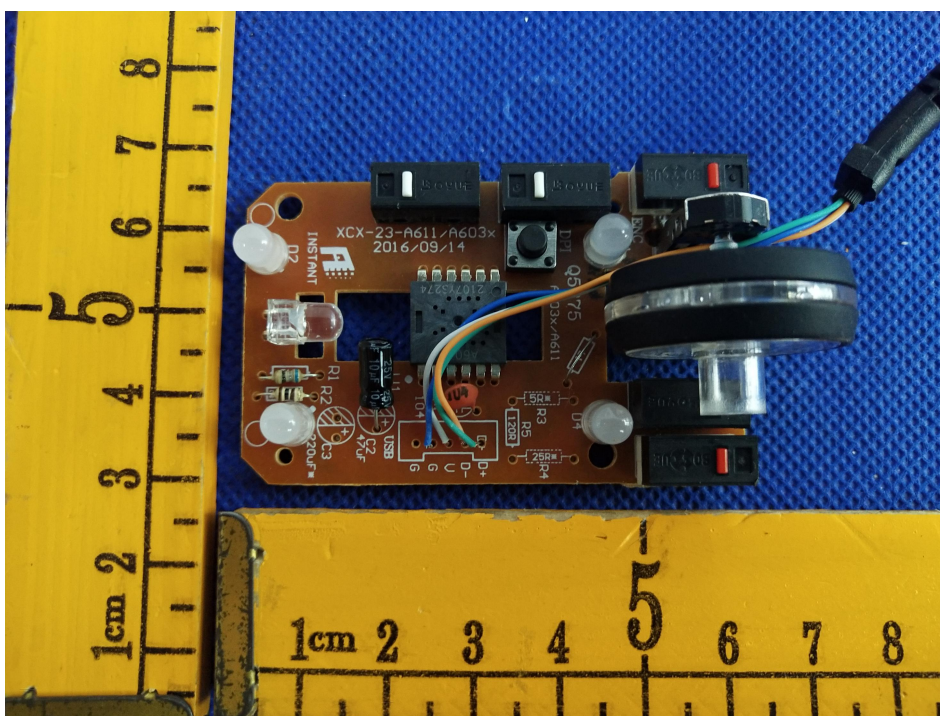
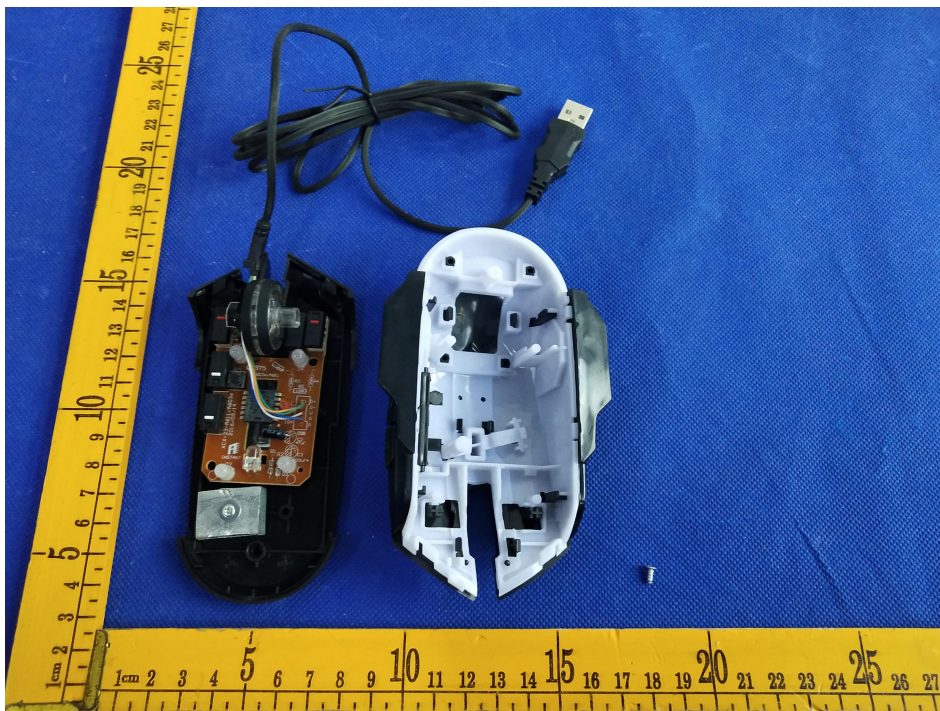
- Chemical confirmation tests were conducted to verify the inconclusive, Chromium (VI) (Cr^{6+}), Polybrominated biphenyls (PBBS) and Polybrominated included in this report.
- As requested by the applicant, only components shown in this report were screened by XFR spectroscopy for 2011/65/EU & (EU) 2015/863, other components were not screened included in this report.

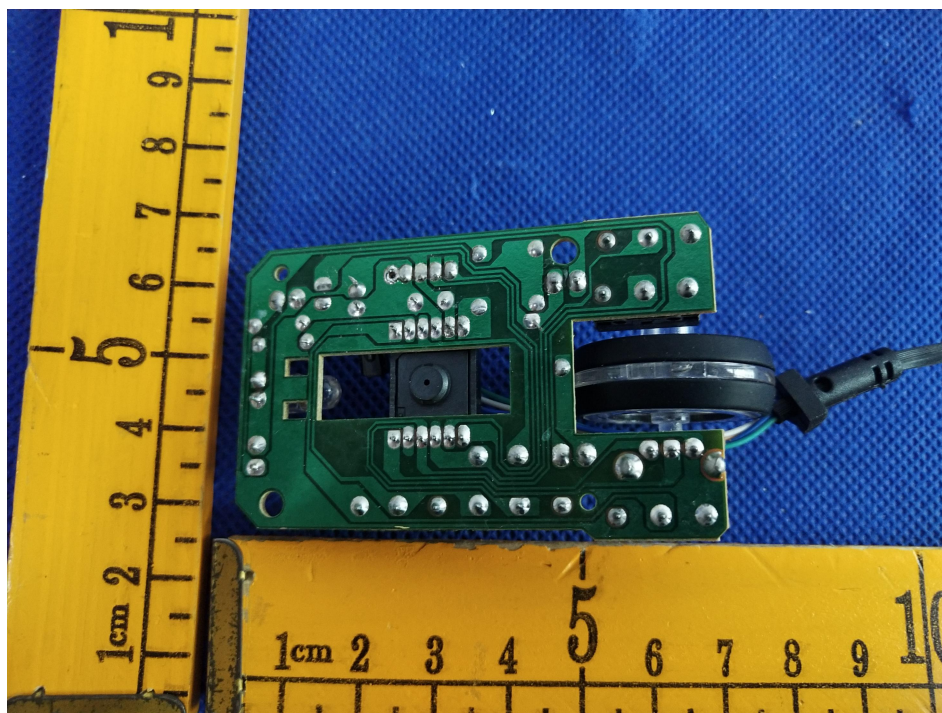
Disclaimers:

- This XRF Screening Report tests were reference purposes only. The applicant shall make its/his/her purposes.
- The results shown in this XRF screening Report will based on various factors. Including but not limited to, the sample size, thickness, area, surface flatness, equipment parameters and matrix effect (e.g. Plastic, Rubber, Metal, Glass, Ceramic etc.). Further wet chemical pre-treatment with relevant chemical equipment analysis are required to obtain quantitative data.
- Photo is included.

Photograph of Sample







***** End of Report *****